

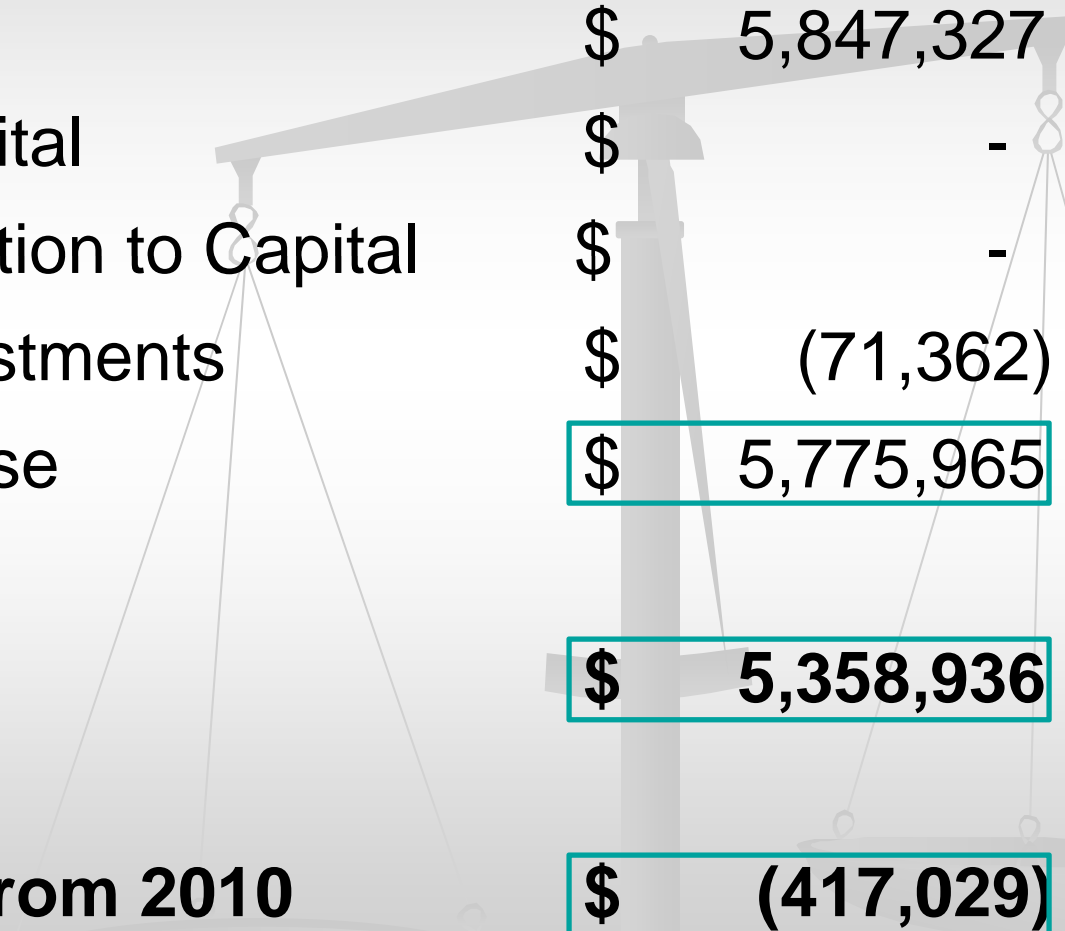
# Gwinnett County Juvenile Court

2011

Budget



# 2011 Budget Request – Juvenile Court



	<b>Total</b>
2010 Adopted Budget	\$ 5,847,327
Contribution to Capital	\$ -
Recon Adj Contribution to Capital	\$ -
Reconciliation Adjustments	\$ (71,362)
2010 Reconciliation Base	<b>\$ 5,775,965</b>
<b>2011 Base Budget</b>	<b>\$ 5,358,936</b>
<b>Difference in budget from 2010</b>	<b>\$ (417,029)</b>

# Gwinnett County Juvenile Court

2011

Budget



# Gwinnett Juvenile Court

## Mission Statement

- *The mission of the Juvenile Court of Gwinnett County is:*
- *To enhance the likelihood of rehabilitation and behavior reform of delinquent children so that they shall be restored, if possible, as secure law-abiding members of society.*
- *To provide the forum, personnel and facilities required for the fair, impartial and efficient administration of justice.*
- *That each child coming before the court shall receive the care, guidance, and control that is in the best interest of the child and the safety of the citizens of Gwinnett County and the State of Georgia.*
- *To promote the healing and recovery of abused and neglected children and to promote permanency for those that have been removed from their home.*

# Overview

The Juvenile Court is a constitutional court. We are governed by State and Federal Statutory laws and rules. These laws and Rules mandate our existence and the functions of every division of our court.

# Overview

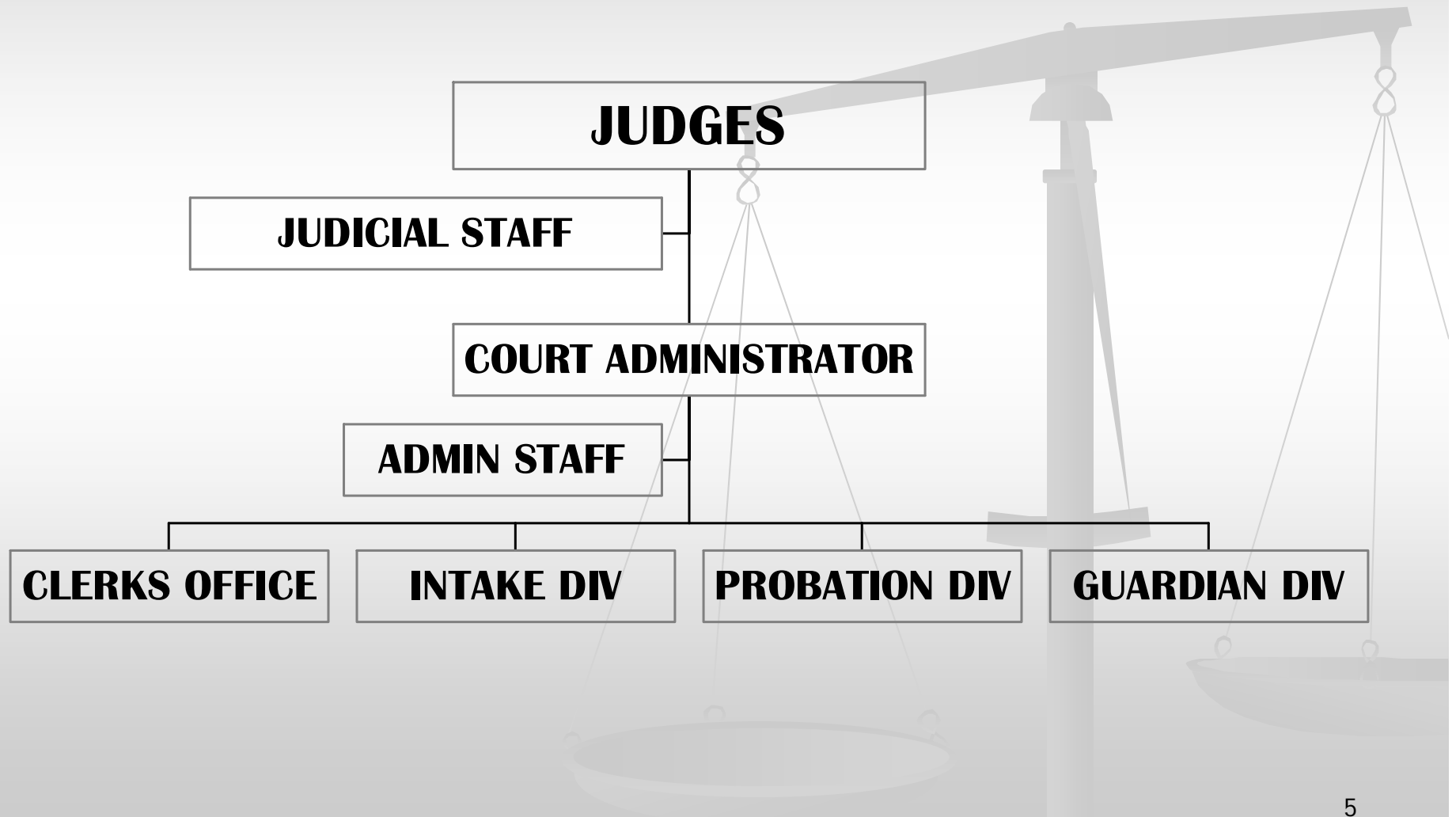


- The Juvenile Court has jurisdiction of delinquent children under the age of 17 years and deprived and unruly children under the age of 18 years.
- Cases in Juvenile Court have over 20 separate time limits that mandate when legal documents and orders must be filed and when hearings must be scheduled.
- We will schedule over 10,000 hearings in Juvenile Court this year.
- With the mandated time limits, we have over 2,800 children that will be scheduled for a future hearing or review.
- Managing these children is in addition to the over 9,000 new charges on over 6,400 new children expected in 2010.

# Overview

- The Juvenile Court currently has 56 full time employees, down from 61 employees in January of 2010
- We have 7 divisions:
  - Clerks Division 7 employees
  - Intake Division 7 employees
  - Probation Division 15 employees
  - Guardian ad litem 9 employees
  - Volunteer Resources 3 employees
  - Administration 6 employees
  - Judicial 9 employees
- This Staffing reduction will reduce our 2011 service level by \$397,911.00
- Just this reduction is a **6.5%** savings from our 2010 service level.

# Organization





# Caseloads

## Clerk of Court

### 7 Staff Members

- Will enter over 9,000 new cases in 2010.
- Will enter over 10,000 dispositions in 2010.
- Will file-in and scan over 125,000 documents in 2010.
- Will handle over 11,000 financial transactions.
- Maintains the courts filing system.
- Staffs the reception windows for our court.

# Caseloads

## Intake

7 Staff Members

- Intake will be assigned over 6,500 cases in in 2010.
- Open cases per officer: 175.
- Each officer will petition over 750 charges.
- Will meet with over 2,500 walk-in citizens.
- Will handle over 2,000 after hours calls for intake decisions.

# Caseloads

## Probation

15 Staff Members

- Currently supervising over 600 youth.
- Will have over 3,000 youth participate in classes and programs in 2010.
- Will administer over 1,000 drug screens in 2010.
- Will file over 750 Violations of Probation in 2010.
- Will make over 6,000 Home and School visits in 2010.

# Caseloads

## Guardian Ad litem

9 Staff Members

- Have 700+ open cases per attorney.
- These Attorneys will prepare for and attend over 4,000 hearings in 2010.
- The 3 Case Coordinators conduct interviews with each child, make recommendations and assist the Attorneys in preparing their case.

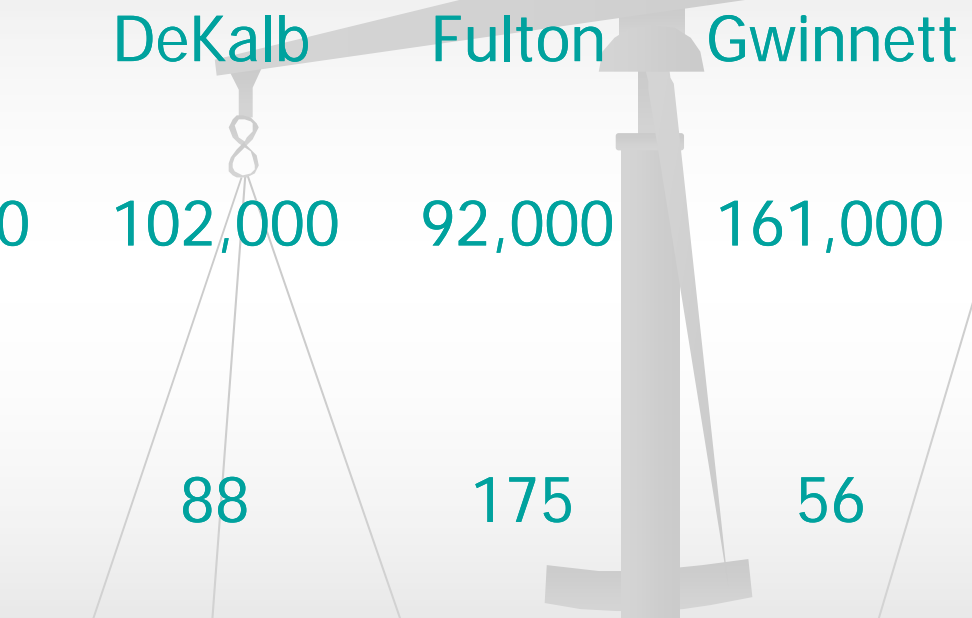
# Caseloads

## Volunteer Resources

3 Staff Members

The Juvenile Court has over 140 volunteers that will work on over 3,500 cases in 2010. This includes Citizen Panels for deprivation cases, Youth Diversion Panels for delinquent cases, and CASA Workers to advocated on behalf of deprived children. These Volunteers save Gwinnett County over \$200,000.00 a year.

# Staff Comparison



	Cobb	DeKalb	Fulton	Gwinnett
School Enrollment	106,000	102,000	92,000	161,000
Court Staff	68	88	175	56

# Our Community Families

- Parents seeking help filed over 1,600 charges against their own children in 2009.

Runaways

Theft charges

Assaults

- We have Parents that padlock themselves in their bedrooms at night for fear of their own child.
- We have families that have no electricity, water or food, live in their cars, or in extended stay motels.

# Our Community

## Neighborhoods

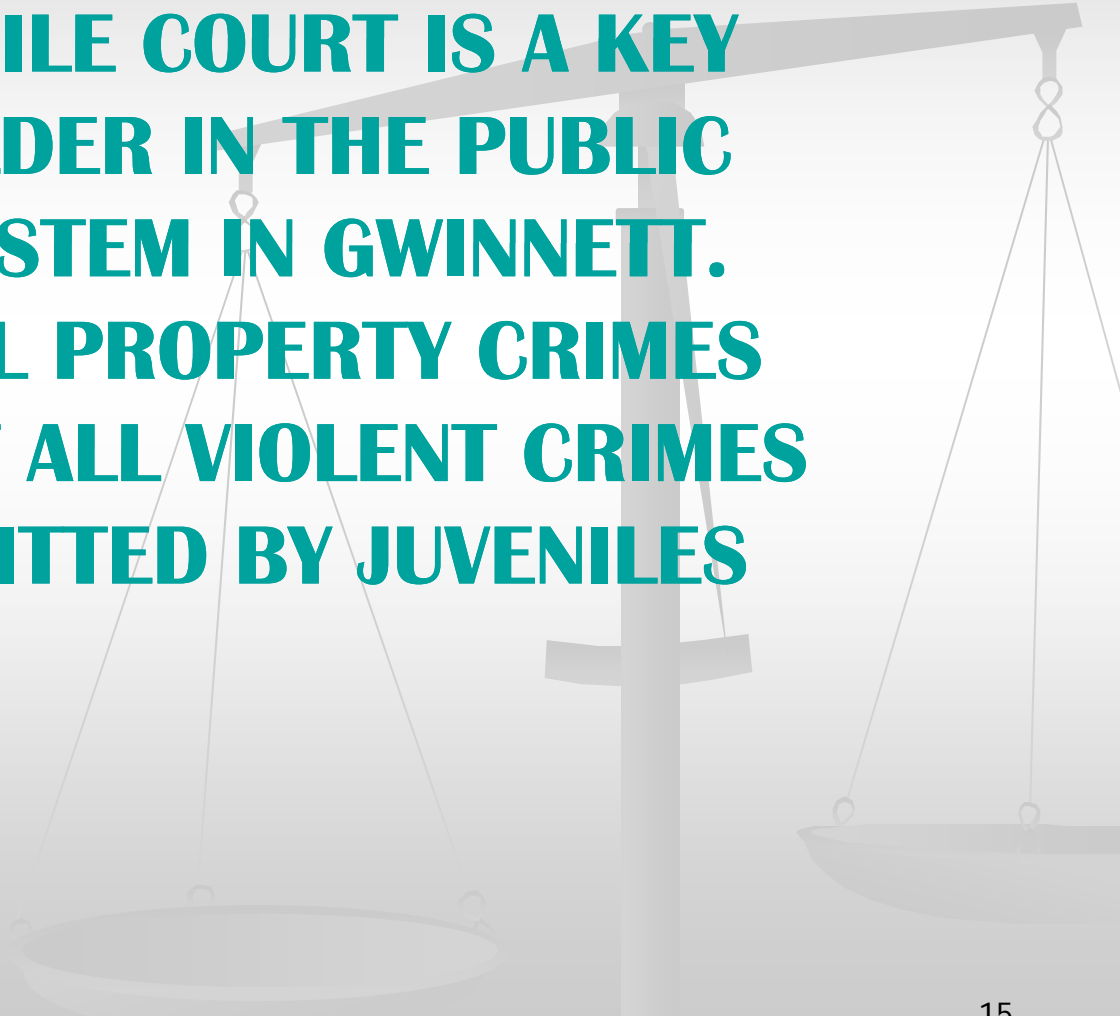
- The majority of juvenile related property crimes and crimes against person are committed within walking distance of their residence.
- One unsupervised incorrigible child can threaten the peace of the whole neighborhood.
- Juvenile Court Intake Staff work with these victims and neighbors to bring the youth under the Court's supervision.
- Juvenile Court Probation Staff go into these neighborhoods and work with these families and supervise these youth in their homes.



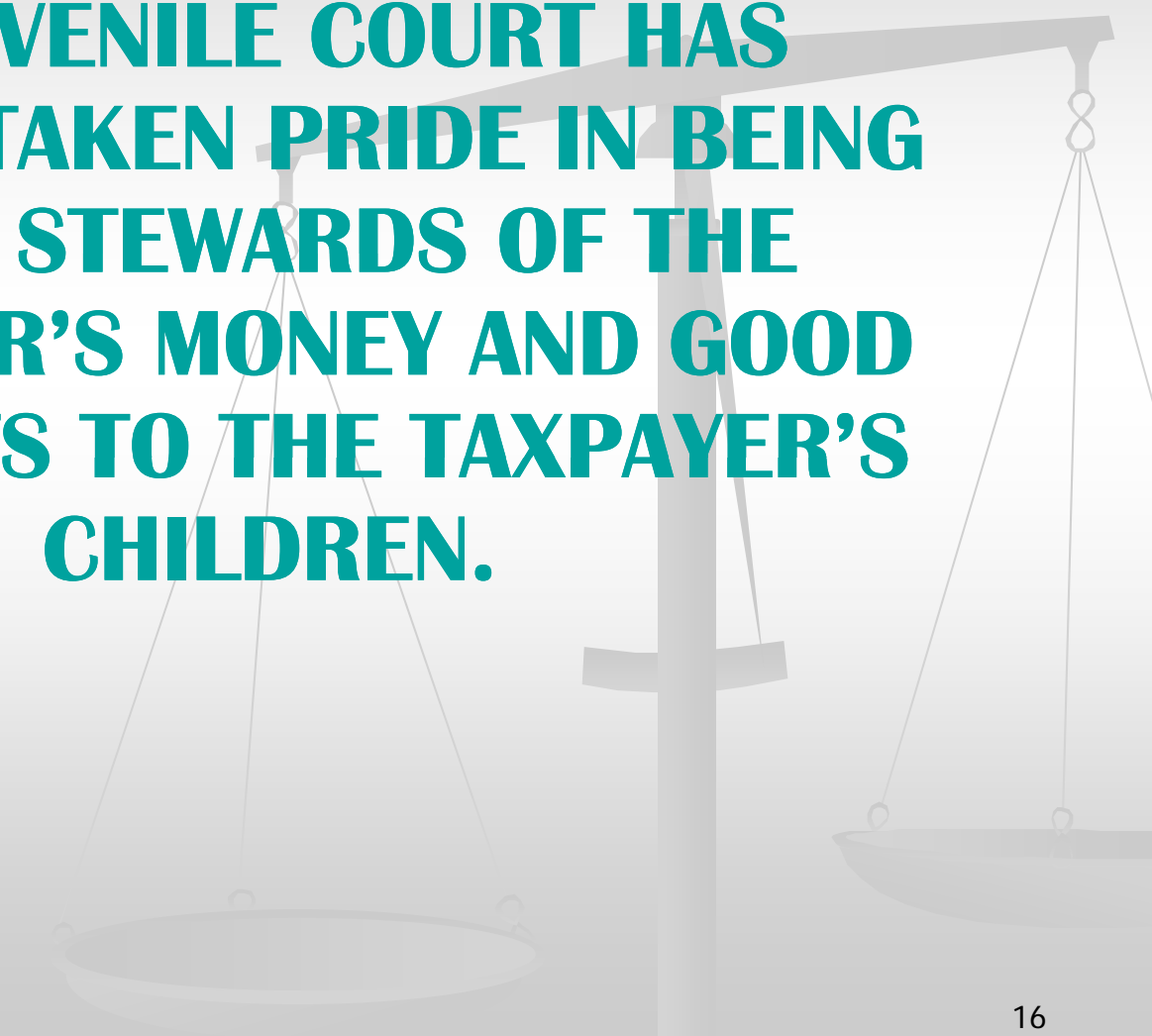
# Our Community

## Schools

- Gwinnett County has the largest school system and the largest Juvenile Court At-Risk population in the State of Georgia.
- The Gwinnett School System is 2<sup>nd</sup> only to the Gwinnett Police Department in filing charges in Juvenile Court.
- Juvenile Court Staff work with School Officers, Teachers, Counselors and Administrators to provide intervention and resources.
- Working together with our School System to assure a safe and positive learning environment for our students.



**THE JUVENILE COURT IS A KEY  
STAKEHOLDER IN THE PUBLIC  
SAFETY SYSTEM IN GWINNETT.  
25% OF ALL PROPERTY CRIMES  
AND 17% OF ALL VIOLENT CRIMES  
ARE COMMITTED BY JUVENILES**



**THE JUVENILE COURT HAS  
ALWAYS TAKEN PRIDE IN BEING  
GOOD STEWARDS OF THE  
TAXPAYER'S MONEY AND GOOD  
SERVANTS TO THE TAXPAYER'S  
CHILDREN.**